

Collection complète

DES

LEÇONS D'HARMONIE

PAR

ALBERT LAVIGNAC

Professeur au Conservatoire

Augmentée de nombreuses leçons écrites spécialement pour cet ouvrage

PAR

MM. Th. DUBOIS, MASSENET, GUIRAUD, LÉO DELIBES,
CÉSAR FRANCK, Ch. LENEPVEU, DUPRATO, Ad. BARTHE, PESSARD,
TAUDOU, BAZILLE

Ch.-M. WIDOR, G. FAURÉ, GUILMANT, X. LEROUX, CHAPUIS,
SAMUEL ROUSSEAU, MARTY et Paul VIDAL

Professeurs au Conservatoire.

1 ^{er} RECUEIL	}	50 Leçons classées progressivement	}	Net	10 fr.
		22 Leçons d'auteurs divers.			
		La partie donnée (livre de l'élève).			
2 ^e RECUEIL,	}	60 Leçons faciles ou de moyenne force. (Examens d'admission)	}	Net.	10 fr.
		(Concours des Conservatoires de Nantes et de Lyon).			
		La partie donnée (livre de l'élève).			
3 ^e RECUEIL	}	60 Leçons difficiles ou très difficiles. (Examens ou	}	Net.	10 fr.
		Concours des Classes d'Harmonie ou de la Classe			
		d'Accompagnement au Conservatoire).			
		16 Leçons d'auteurs divers.			
		La partie donnée (livre de l'élève).		Net.	5 fr.

Henry LEMOINE et C^{ie}

17, rue Pigalle, PARIS. — BRUXELLES, rue de la Madeleine, 13

Reproduction et traduction réservées pour tous pays.

Y COMPRIS LA SUÈDE, LA NORVÈGE ET LE DANEMARK.

b 35=251

UNIVERSITY OF TEXAS
LIBRARY
AUSTIN, TEXAS

TABLE THÉMATIQUE

A signifie Alterné
 B " Basse
 C " Chant

1er Recueil.

N^{os}

1 B Moderato.

2 C And^{te} espressivo.

3 B All^o giocoso.

4 C Andante.

5 B Allegro.

6 C Allegretto.

7 B Andante.

8 C All^{to} grazioso.

9 B All^o vivo.

10 C And^{te} religioso.

11 B Moderato.

12 A Andante.

13 B Allegretto.

14 C Moderato.

15 B All^{to}.

16 C And^{no} molto espressivo.

17 B All^o moderato.

18 C Allegretto.

19 B Moderato.

20 C Cantabile.

21 B Moderato.

22 C And^{no} malinconico.

23 A All^o animato.

24 C And^{no} tranquillo.

25 B All^o moderato.

26 A Tempo di minuetto.

27 B Adagio.

N^{os}

28 C And^{no} espressivo.

29 A All^o giusto.

30 C All^o animato. Vivo.

31 B Allegro.

32 C And^{no} tranquillo.

33 B Allegro.

34 C And^{no} quasi Allegretto.

35 A All^o agitato.

36 C All^o vivo. And^{no} religioso.

37 B Allegro.

38 C Animato.

39 B Un poco adagio.

40 C All^o vivo.

41 A Allegretto. Andante.

42 C Moderato.

43 B All^o molto.

44 C Larghetto cantabile.

45 B And^{no} serio.

46 C All^o molto.

47 B Allegro.

48 C And^{no} espressivo.

49 B All^o sostenuto.

50 C And^{te} sostenuto.

51 B Moderato. BAZILLE.

52 C Andante. BAZILLE.

53 A Largo. TAUDOU. All^{to}.

54 A Andante. TAUDOU.

55
56
57
58
59
60
61
62
63
73
74
75
76
77
78
79
80
81
82
83
84
85
86
87
88
89
90

55 B Allegro. PESSARD.
 56 C Andantino. PESSARD.
 57 B All^o moderato. BARTHE.
 58 C Allegro. BARTHE.
 59 A And^{te} espressivo. LENEVEU.
 60 A Moderato. LENEVEU.
 61 B Moderato. DUBOIS.
 62 C And^{te} dolce espressivo. DUPUIS.
 63 B Moderato. DUPRATO.

64 C All^{to} moderato. DUPRATO.
 65 B Poco mosso. FRANCK.
 66 C Andantino. FRANCK.
 67 B Largo. DELIBES.
 68 C And^{te} sostenuto. DELIBES.
 69 B Andante. GUIRAUD.
 70 C Andante. GUIRAUD.
 71 B Moderato. MASSENET.
 72 C Larghetto espressivo. MASSENET.

2^e Recueil.

73 A Moderato.
 74 A Allegro.
 75 A Allegro.
 76 A Moderato.
 77 A Moderato.
 78 A And^{te} tranquillo. Rit. a Tempo.
 79 A Animato. Più mod^o.
 80 A Andantino. espressivo.
 81 A And^{te} moderato. All^o espressivo.
 82 A Andantino. Rit.
 83 A Moderato. espressivo.
 84 A All^o deciso. marcato.
 85 A Moderato. marcato.
 86 B Allegro.
 87 B Andantino.
 88 B Moderato.
 89 B All^o deciso.
 90 B Allegro.

91 B Tranquillo.
 92 B And^{te} moderato.
 93 B Molto placido.
 94 B Moderato.
 95 B All^o giusto.
 96 B All^o vivo.
 97 B Tranquillo.
 98 B Molto moderato.
 99 B Animato.
 100 B Andante. mf.
 101 B And^{te} moderato.
 102 B Moderato.
 103 B All^o maestoso. marcato.
 104 B Andante.
 105 B Tempo giusto.
 106 B Moderato.
 107 B Allegro.
 108 B Allegro.

109 C *Andantino.*
All^{mo} grazioso.

110 C

111 C *Allegro.*
Commodo.

112 C

113 C *Allegretto.*

114 C *Adagio.*

115 C *Mod^o placido.*
div.

116 C *Moderato.*

117 C *Andantino.*
Moderato.

118 C *Moderato.*

119 C *Moderato.*
All^{mo} semplice.

120 C

121 C *And^{no} mesto.*

122 C *Mod^o cantabile.*

123 C *And^{no} espressivo.*

124 C *Allegretto.*

125 C *And^{no} tranquillo.*

126 C *All^{mo} grazioso.*

127 C *Cantabile.* *mf*

128 C *And^o cantabile.*

129 C *And^{no} cantabile.*

130 C *Moderato.*
Mod^o espressivo.

131 C *And^o molto espressivo.*

132 C

3^e Recueil.

133 A *Moderato.*

134 A *Allegretto.*

135 A *Tranquillo.*

136 A *All^o mod^o.*

137 A *Andantino.*

138 A *Lento.*

139 A *Largo.*

140 A *Grave.* *energico.* *molto.*

141 A *Moderato.*

142 A *All^o mod^o.*

143 A *Moderato.*

144 A *Molto moderato.*

145 A *Adagio.*

146 A *Animato.*

147 A *Allegro.*

148 A *Sostenuto.*

149 A *All^o animato.* *Più moderato.*

150 A *And^o moderato.* *Allegretto.*

151 A *Moderato.*

152 A

153 A *Triste.*

154 B *Molto sostenuto.*

155 B *Allegro.*

156 B *Grave.*

157 B *Largo.*

158 B *Moderato.*

159 B *Tranquillo.*

160 B *Moderato.*

161 B *Andante.*

162 B Grave mod^{to}.

163 B Moderato.

164 B Moderato.

165 C Calme.
p molto legato.

166 C Très calme et expressif.

167 C Allegretto.

168 C Allegretto.

169 C And^{no} tranquillo.

170 C Allegretto.

171 C Adagio cantabile.

172 C All^{to} scherzando.

173 C And^{no} espressivo.
mf pancia.

174 C All^{to} quasi and^{no}.

175 C All^{to} grazioso.

176 C And^{no} cantabile.

177 B Andante. 0 3 0 5 7 6 4 7

178 B Allegro. 3 4 8 6 4 7
5 6 5 6 4 2 +

179 B Moderato. 0 +4 5 0 +4 5
0 1 2 4 7 4 3

180 B Tranquillo. 8 3 5 0 5 7 0 4 7 4 8
0 5 5 6 4 2 +

181 B Andante. 8 16 16 4 3
0 5 5 6 4 2 +

182 B Adagio. 3 7 7 7
0 1 2 4 7 4 3

183 B Moderato. 0 1 2 4 7 4 3
0 5 5 6 4 2 +

184 B Lento. 0 3 5 4 3 +2 6 6 5 6
0 5 5 6 4 2 +

185 B Allegro. 0 3 5 1 5
0 5 5 6 4 2 +

186 B Adagio. 5-5- 3 7 3 7 9 3
8 6 6 +6 4 7 5

187 B Moderato. 8 6 +4 6
0 1 2 4 7 4 3

188 B Largo. 3 5 5 5 5 5 5 5 5
0 5 5 6 4 2 +

189 B Lento. 3 7 +6 5 7 6 5
0 5 5 6 4 2 +

190 B Andantino. 6 6 +7 6 8
0 5 5 6 4 2 +

191 B Moderato. 5 3 +6 0 8 5 +6
0 1 2 4 7 4 3

192 B Adagio. 9 8 15 6 5
5 5 5 6 4 2 +

193 B Paul VIDAL.
Andante.

194 C Paul VIDAL.
Andante.

195 A Georges MARTY.
And^{te} non troppo.

196 C Georges MARTY.
Andantino.

197 B Samuel ROUSSEAU.
Andante.

198 C Samuel ROUSSEAU.
Modéré.

199 B Aug. CHAPUIS.
Modéré-expressif.

200 C Aug. CHAPUIS.
Moderato.

201 B Xavier LEROUX.
Andante.

202 C Xavier LEROUX.
Cantabile.

203 B Alex. GUILMANT.
Modéré.

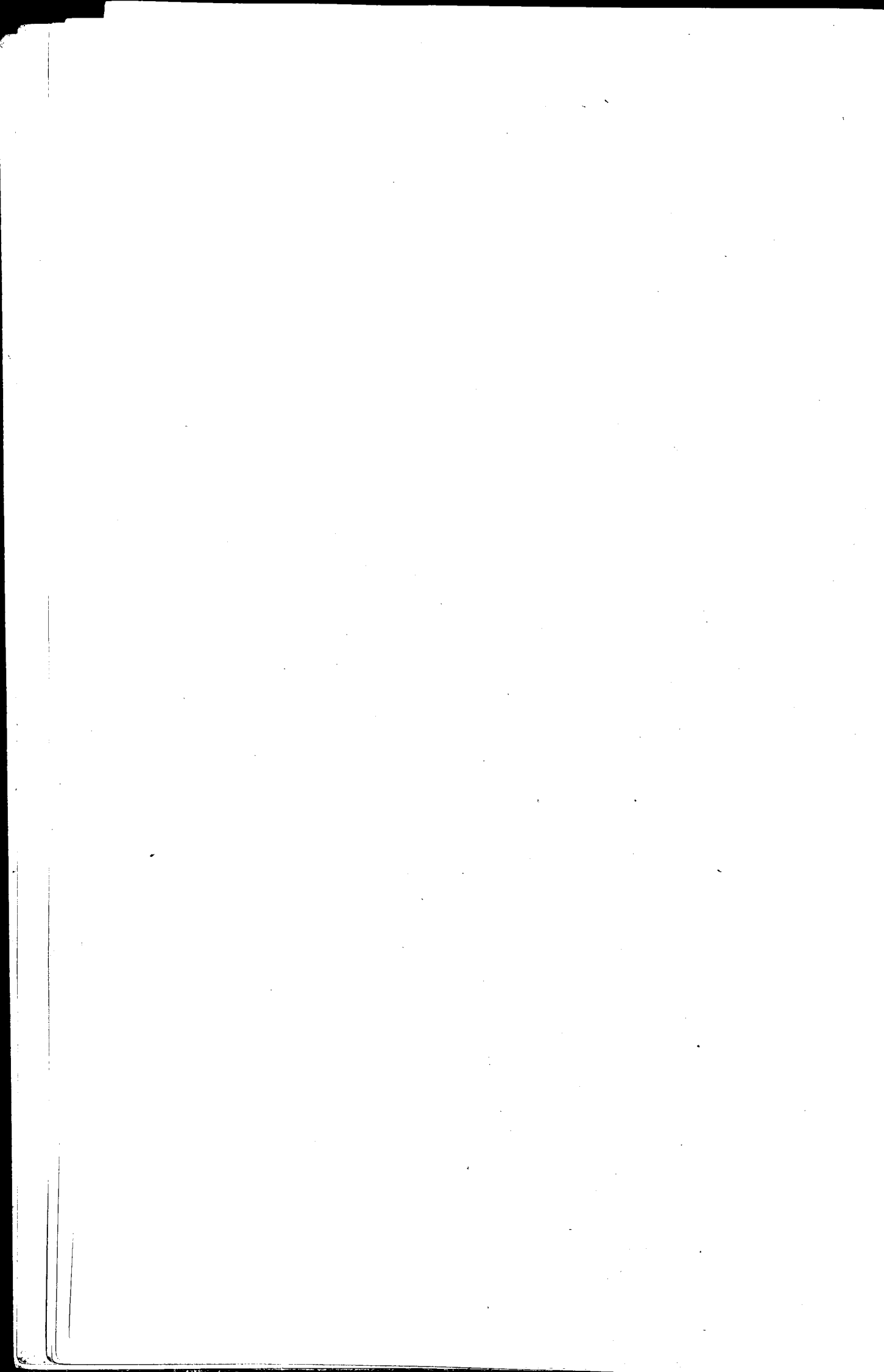
204 C Alex. GUILMANT.
Modéré.

205 B Gabriel FAURÉ.
Sans lenteur.

206 C Gabriel FAURÉ.
Moderato.

207 B Ch. M. WIDOR.
Moderato.

208 C Ch. M. WIDOR.
Moderato.
dolce.



COLLECTION COMPLÈTE
DES
LEÇONS D'HARMONIE

PAR
ALBERT LAVIGNAC.

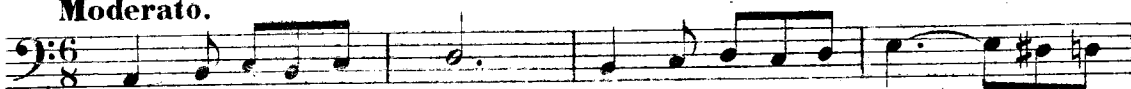
2^e Recueil.

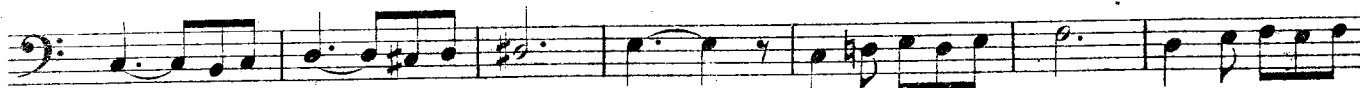
Parties données.

N^o 73

Admission* 1891 — 1^{re} Epreuve.

Moderato.

BASSE DONNÉE. 



CHANT DONNÉ.



N^o 74

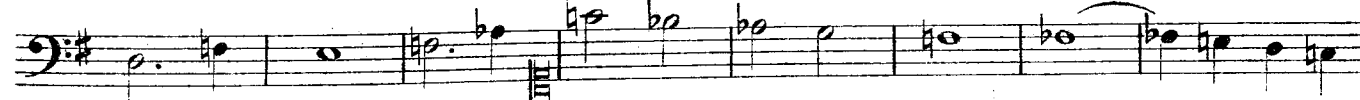
Admission 1891 — 2^e Epreuve.

Allegro.

BASSE DONNÉE. 



CHANT DONNÉ.



* Examen d'Admission dans la Classe
de l'Auteur de ce Recueil.

N° 75

Admission 1892— 1^{re} Epreuve.

Allegro.
 BASSE DONNÉE. *f*

Tempo di minuetto.
p

CHANT DONNÉ. *Riten.* **a Tempo.**

Allegro.
f

N° 76

Admission 1892— 2^e Epreuve.

Moderato.
 BASSE DONNÉE.

CHANT DONNÉ.

N° 77

Admission 1893— 1^{re} Epreuve.

Moderato.

1 2 3 4

BASSE DONNÉE.

CHANT DONNÉ.

N° 78

Admission 1893 — 2^e Epreuve.

And^{te} tranquillo.

BASSE DONNÉE. *mf*

p *Cresc.*

CHANT DONNÉ. *f* *Riten.* *a Tempo.* *Espressivo.* *pp*

N° 79

Admission 1894 — 1^{re} Epreuve.

Animato.

BASSE DONNÉE.

CHANT DONNÉ. *Più moderato.* *Espressivo.* *Ri - tar - dan - do.* *Riten.* **Tempo I^o**

N° 80

Admission 1894 - 2^e Epreuve.

Andantino.

BASSE DONNÉE.

CHANT DONNÉ.

N° 81

Admission 1895 - 1^{re} Epreuve.

And^{te} moderato.

BASSE DONNÉE.

All^o espressivo.
mf

CHANT DONNÉ.
scen do f Dimin. pp

N° 82

Admission 1895 - 2^e Epreuve.

Andantino.

BASSE DONNÉE.

CHANT DONNÉ.

Rit a Tempo.

N^o 83

Admission 1897— 1^{re} Epreuve.

Moderato.

BASSE DONNÉE.

Marcato.

CHANT DONNÉ.

BASSE DONNÉE.

N^o 84

Admission 1898— 1^{re} Epreuve.

All^o deciso.

BASSE DONNÉE.

Marcato.

f Legato.

CHANT DONNÉ.

p Espressivo.

Marcato.

f Legato.

Espressivo.

BASSE DONNÉE.

Marcato.

N° 85

Admission 1898 — 2^e Epreuve.

Moderato.

BASSE DONNÉE.

CHANT DONNÉ.

N° 86

Allegro.

BASSE DONNÉE.

N° 87

Andantino.

BASSE DONNÉE.

Three staves of musical notation in bass clef, featuring various rhythmic values and accidentals. The first staff begins with a sharp sign and a flat sign. The second staff continues the melodic line. The third staff concludes the exercise with a double bar line.

N^o 88

Moderato.

BASSE DONNÉE.

Three staves of musical notation in bass clef, starting with a 3/2 time signature. The first staff is labeled 'BASSE DONNÉE.' and includes the tempo marking 'Moderato.' The notation consists of eighth and sixteenth notes with various accidentals. The second and third staves continue the piece, ending with a double bar line.

N^o 89

All^o deciso.

BASSE DONNÉE.

Six staves of musical notation in bass clef, starting with a common time signature. The first staff is labeled 'BASSE DONNÉE.' and includes the tempo marking 'All^o deciso.' The notation is more rhythmic, featuring eighth and sixteenth notes with many accidentals. The second through sixth staves continue the piece, ending with a double bar line.

N° 90

Allegro.

BASSE DONNÉE.

N° 91

Tranquillo.

BASSE DONNÉE.

N^o 92

And^{te} moderato.

BASSE DONNÉE.

Musical score for No. 92, Basses Donnees, Andante moderato. The score consists of eight staves of music in bass clef, 12/8 time signature, and a key signature of two flats (B-flat and E-flat). The music features a variety of rhythmic patterns, including eighth and sixteenth notes, and rests.

N^o 93

Molto placido.

BASSE DONNÉE.

Musical score for No. 93, Basses Donnees, Molto placido. The score consists of three staves of music in bass clef, common time signature, and a key signature of two flats (B-flat and E-flat). The music is characterized by a slow, steady pace with a focus on sustained notes and simple rhythmic patterns.

N^o 94

Moderato.

BASSE DONNÉE.

enh.

N^o 95

All^o giusto.

BASSE DONNÉE.

18975. H.

N° 96

All° vivo.

BASSE DONNÉE.

Musical score for N° 96, Basses, All° vivo. The score consists of seven staves of music in bass clef with a key signature of two flats (Bb and Eb) and a common time signature (C). The music features a variety of rhythmic patterns, including eighth and sixteenth notes, and rests. The piece concludes with a double bar line.

N° 97

Tranquillo.

BASSE DONNÉE.

Musical score for N° 97, Basses, Tranquillo. The score consists of four staves of music in bass clef with a key signature of two sharps (F# and C#) and a common time signature (C). The music is characterized by a slower tempo and features a mix of quarter and eighth notes. The piece ends with a double bar line.

N^o 98

Molto moderato.

BASSE DONNÉE.

Musical score for Bassoon (Basse Donnée), No. 98, Molto moderato. The score consists of nine staves of music in G major (one sharp) and common time (C). The piece begins with a melodic line in the first staff, followed by a more rhythmic and melodic passage in the second staff. The third staff continues the melodic development with some rests. The fourth and fifth staves show a more active melodic line with some chromaticism. The sixth and seventh staves continue the melodic flow. The eighth staff has a significant rest for the first few measures before resuming the melodic line. The ninth staff concludes the piece with a final melodic phrase and a double bar line.

N^o 99

Animato.

BASSE DONNÉE.

Musical score for Bassoon (Basse Donnée), No. 99, Animato. The score consists of two staves of music in G major (one sharp) and common time (C). The piece begins with a melodic line in the first staff, followed by a more rhythmic and melodic passage in the second staff.

Three staves of musical notation for exercise No 100. The first staff is in bass clef with a key signature of two sharps (F# and C#). The second and third staves are in treble clef with the same key signature. The music consists of eighth and sixteenth notes, some beamed together, and rests.

No 100

Andante.

BASSE DONNÉE.

Four staves of musical notation for exercise No 101. The first staff is in bass clef with a key signature of two sharps (F# and C#). The music is marked *mf* and includes a triplet of eighth notes. The second staff is marked *Cresc.* and *f*. The third staff includes trills (*tr*) and a *Dimin.* marking. The fourth staff includes *Cresc.*, *f*, *Dimin.*, *pp*, and *Riten.* markings.

No 101

Andante moderato.

Conservatoire de Nantes — Concours 1891.

BASSE DONNÉE.

Four staves of musical notation for exercise No 101. The first staff is in bass clef with a key signature of two flats (Bb and Eb). The music is marked *Andante moderato.* and includes a *Rallentando.* marking at the end of the fourth staff.

N^o 102

Conservatoire de Nantes—Concours 1894.

Moderato.

BASSE DONNÉE.

N^o 103

Conservatoire de Nantes—Concours 1895.

All^o maestoso.

BASSE DONNÉE.

N^o 104

Conservatoire de Nantes—Concours 1896.

Andante.

BASSE DONNÉE.

Musical score for N° 104, Bass Clef, 3/2 time signature, Andante tempo. The score consists of six staves of music. The key signature is two sharps (F# and C#). The music begins with a half note G2, followed by a quarter note A2, and continues with a series of eighth and quarter notes, ending with a double bar line.

N^o 105

Conservatoire de Nantes—Concours 1897.

Tempo giusto.

BASSE DONNÉE.

Musical score for N° 105, Bass Clef, 4/2 time signature, Tempo giusto tempo. The score consists of five staves of music. The key signature is two flats (Bb and Eb). The music begins with a half note G2, followed by a half note A2, and continues with a series of quarter and eighth notes, ending with a double bar line.

N^o 106

Conservatoire de Nantes—Concours 1898.

Moderato.

BASSE DONNÉE.

Musical score for N° 106, Moderato, Bass Clef. The score consists of six staves of music in 3/2 time. It features various rhythmic patterns, including triplets and slurs, and ends with a double bar line.

N^o 107

Conservatoire de Lyon—Concours 1898.

Allegro.

BASSE DONNÉE.

Musical score for N° 107, Allegro, Bass Clef. The score consists of six staves of music in common time. It features a more active and rhythmic style with many eighth and sixteenth notes, and ends with a double bar line.

N^o 108

Conservatoire de Lyon — Concours 1899.

Allegro.

BASSE DONNÉE.

Musical score for Bass (Basse Donnée) in 4/2 time, marked Allegro. The score consists of seven staves of music. The first staff begins with a treble clef and a key signature of one flat (B-flat). The music features a mix of eighth and sixteenth notes, with some measures containing beamed sixteenth notes. There are several slurs and accents throughout the piece. The piece concludes with a double bar line.

N^o 109

Andantino.

CHANT DONNÉ.

Musical score for Voice (Chant Donnée) in 3/4 time, marked Andantino. The score consists of five staves of music. The first staff begins with a treble clef and a key signature of two flats (B-flat and E-flat). The music is characterized by a slow, melodic line with many slurs and accents. The piece concludes with a double bar line.

N^o 110

All^{to} grazioso.

CHANT DONNÉ.

N^o 111

Allegro.

CHANT DONNÉ.

N^o 112

Commodo.

CHANT DONNÉ.

Musical score for N° 112, Commodo. Chant Donné. The score consists of five staves of music. The first staff begins with a treble clef, a key signature of two flats (B-flat major), and a 3/2 time signature. The music is written in a single melodic line with various note values, including quarter, eighth, and sixteenth notes, and rests. The piece concludes with a double bar line.

N^o 113

Allegretto.

CHANT DONNÉ.

Musical score for N° 113, Allegretto. Chant Donné. The score consists of six staves of music. The first staff begins with a treble clef, a key signature of two sharps (D major), and a 2/4 time signature. The music is written in a single melodic line with various note values, including quarter, eighth, and sixteenth notes, and rests. The piece concludes with a double bar line.

N^o 114

Adagio.

CHANT DONNÉ.

N^o 115

Mod^{to} placido.

CHANT DONNÉ.

N^o 116

Moderato.

CHANT DONNÉ.

Five staves of musical notation for a piano accompaniment. The music is written in a key with one sharp (F#) and a common time signature. It features various melodic lines, some with slurs and ties, and chords. The notation includes eighth and sixteenth notes, as well as rests.

Nº 117

Andantino.

CHANT DONNÉ.

First staff of the vocal line. It begins with the marking "p Espressivo." and contains a melodic line with slurs and ties. A fermata is placed over a note in the middle of the staff.

Second staff of the vocal line. It begins with the marking "Poco rit." and ends with a forte "f" dynamic marking. The melody continues with slurs and ties.

Third staff of the vocal line. It begins with the marking "Dolce." and continues the melodic line with slurs and ties.

Fourth staff of the vocal line. It features a forte "sf" dynamic marking followed by a piano "pp" dynamic marking. The melody continues with slurs and ties.

Fifth staff of the vocal line. It begins with a forte "f" dynamic marking and continues the melodic line with slurs and ties.

Sixth staff of the vocal line. It begins with a "Rit" (ritardando) marking, followed by "a Tempo." and a mezzo-forte "mf" dynamic marking. The melody continues with slurs and ties.

Seventh staff of the vocal line. It begins with a "Cresc." (crescendo) marking, followed by a piano "p" dynamic marking, and ends with "Dimin. e rallent." (diminuendo e rallentando) markings. The melody continues with slurs and ties.

N^o 118

Moderato.

CHANT DONNÉ.

N^o 119

Moderato.

CHANT DONNÉ.

N^o 120

All^{to} semplice.

CHANT DONNÉ.

Musical score for No. 120, Chant Donné, All^{to} semplice. The score consists of five staves of music in G major, 2/4 time. The melody is characterized by eighth-note patterns and slurs.

N^o 121

And^{no} mesto.

CHANT DONNÉ.

Musical score for No. 121, Chant Donné, And^{no} mesto. The score consists of six staves of music in G major, 2/4 time. It features several triplet markings (indicated by '3') and slurs.

N^o 122

Mod^{to} cantabile.

CHANT DONNÉ.

N^o 123

And^{no} espressivo.

CHANT DONNÉ.

p

Ritenuito.

p

Cresc.

f Allargando.

Nº 124

CHANT DONNÉ.

Allegretto.

p

Più animato.

f

f

Calmato.

Rit

Tempo I^o

p

Long. Lento.

pp

N^o 125

Conservatoire de Nantes - Concours 1891.

And^{no} tranquillo.

CHANT DONNÉ.

Musical score for No. 125, featuring vocal line and piano accompaniment. The score is in 2/4 time and begins with a piano (*p*) dynamic. The vocal line is marked 'CHANT DONNÉ.' and includes a *mf* dynamic. The piano accompaniment consists of three staves with various rhythmic patterns and dynamics, including a *f* dynamic in the second staff.

N^o 126

Conservatoire de Nantes - Concours 1894.

All^{to} grazioso.

CHANT DONNÉ.

Musical score for No. 126, featuring vocal line and piano accompaniment. The score is in 2/4 time and begins with a mezzo-forte (*mf*) dynamic. The vocal line is marked 'CHANT DONNÉ.' and includes a *mf* dynamic. The piano accompaniment consists of five staves with various rhythmic patterns and dynamics, including a *mf* dynamic.

N^o 127

Conservatoire de Nantes - Concours 1895.

Cantabile.

CHANT DONNÉ.

Musical score for No. 127, featuring vocal line and piano accompaniment. The score is in 2/4 time and begins with a mezzo-forte (*mf*) dynamic. The vocal line is marked 'CHANT DONNÉ.' and includes a *mf* dynamic. The piano accompaniment consists of two staves with various rhythmic patterns and dynamics, including a *mf* dynamic and triplet markings.

Cresc. 3

p 3 3 3 *Cresc.*

3 3 3 *p*

3 3 *Cresc.*

f

N° 128

Conservatoire de Nantes— Concours 1896.

And^{te} cantabile.

CHANT DONNÉ.

p

Cresc.

mf

p

N^o 129

Conservatoire de Nantes - Concours 1897.

And^{no} cantabile.

CHANT DONNÉ.

Musical score for No. 129, featuring three staves of music. The first staff begins with a treble clef, a 3/4 time signature, and a piano (*p*) dynamic marking. The second staff includes a *Cresc.* marking. The third staff begins with a forte (*f*) dynamic marking. The music consists of a single melodic line with various ornaments and phrasing.

N^o 130

Conservatoire de Nantes - Concours 1898.

Moderato.

CHANT DONNÉ.

Musical score for No. 130, featuring four staves of music. The first staff begins with a treble clef, a common time signature, and a forte (*f*) dynamic marking. The second staff includes a pianissimo (*pp*) marking. The third staff includes a piano (*p*) marking. The fourth staff includes a pianissimo (*pp*) marking and contains two first endings, labeled '1' and '2'. The music consists of a single melodic line with various ornaments and phrasing.

N^o 131

Conservatoire de Lyon - Concours 1898.

Mod^{to} espressivo.

CHANT DONNÉ.

Musical score for No. 131, featuring two staves of music. The first staff begins with a treble clef, a common time signature, and a mezzo-forte (*mf*) dynamic marking. The second staff continues the melodic line. The music consists of a single melodic line with various ornaments and phrasing.

p Scherzando.

Dim. Cre.

Semplice.
pp

- scen - do. f

No 132

Conservatoire de Lyon - Concours 1899.

And^{te} molto espressivo.

CHANT DONNÉ.

p

Rit **a Tempo.**

